



# VISION ENGINEERING

**Fire fighting  
Electric  
Construction**



**Fire Fighting  
Planning**

**Fire Fighting  
Consulting**

**Fire Fighting  
R&D**

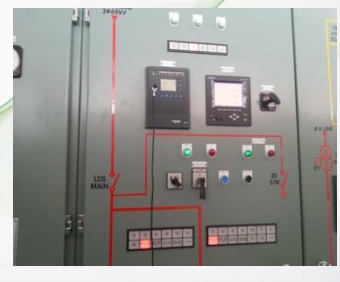
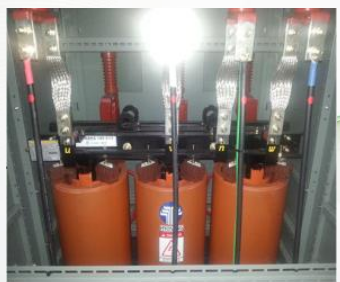
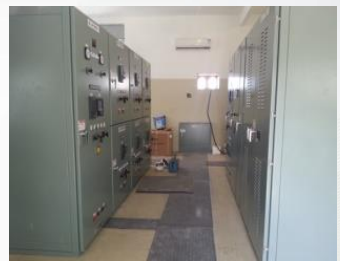
**Fire Fighting  
Construction**



## Installation of 69 kV substation

[Photo electrical construction]

- Substation project 69kV
- 13.8kv cubicle
- Mold TR
- Control panel



## Installation of 69 kV substation

[Photo electrical construction]

- Installation of high and low voltage cubicle
- Installation of lighting panel
- Installation of power panel
- condenser





## Installation of fire fighting



### [Photo installation]

- Central valve
- Alarm valve
- Test valve
- Installation of Sprinklers

## Installation of fire fighting



### [Photo electrical construction]

- Valve of repression
- Installation kit transmitter and fight fire Hydrant
- Monitoring system
- Monitoring system transmitter (NOTIFIRE)

# Sprinkler Pressure Monitoring System



- Sprinkler Pressure Monitoring System remotely monitors and controls pressure to inside of pipe.
- Sprinkler Pressure Monitoring System is Fire Alarm Total Solution System that is not be supported in Conventional Fire Alarm System.



MOBILE REMOTE MONITOR

Fire Prevention Total Monitoring/Control System

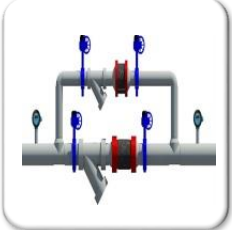
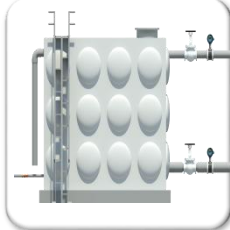


Fiber-Optic Cable  
Ethernet

Fiber-Optic Cable  
Ethernet

- LAN Communication System
- RS 485 TSP AWG #16 (1Pair/3C X 2 Line)

MAIN CONTROLLER





## Fire Alarm Control Panel



<b>Composition</b>	Fire Alarm Control Panel + 3D Graphic CRT
<b>FACP Size</b>	650(W) x 1300(H) x 200(D)
<b>Power</b>	Commercial electricity AC 220V – Battery 24V(120minutes)
<b>Circuit</b>	basic 31Point X 10CH X 10Board(Option Making)
<b>NODE</b>	Fire Alarm Control Panel 1~100ea, Each Block can be extended.
<b>Communication System</b>	RS 485 Communication(1.2km) /Ethernet Optical-Single Mode
<b>Program</b>	LCD display and notebook in front of Fire Alarm Control Pane
<b>CRT Spec</b>	Industrial Computer Commercial Power AC 220V
<b>Communication System</b>	RS 485 Loop System or Style 6
<b>Expendability</b>	Free Expendability between Sub FACP with Main FACP.
<b>Control/Monitor</b>	Control(Pump, Valve, Fan, Sound etc.) Monitor(Digital, Contact, Detector)
<b>Language</b>	Korean, English, Chinese, Japanese. Various language can be translated

## Sprinkler Pressure Monitoring System CRT



<b>Operating System</b>	Windows 7 Professional edition	
<b>Hardware</b>	HMI Computer	- Maker : HP
		- CPU : Intel Xeon W3550(3.0GHz)
		- Main Memory : 4GB
		- HDD : 500GB
		- DVD+CD-RW Combo
		- 10/100 LAN Card
		- Keyboard and Mouse
23" TFT LED Monitor	- Maximum resolution : 1680 x 1050	
	- brightness : 300 cd/m2	
Basic S/W & HMI Tool	- HANGLE MS Windows7 Professional	
	- HANGLE MS Office	
	- HMI Software	
Network Equipment	- Fiber Optic Ethernet Switch	
	- FTP Cable, Category 5 with connector	

# Green-125

HFC-125 Clean Agent Fire Extinguishing System



## Green-125 Pressure Monitoring

- Able to mount digital pressure gauge
- Cylinder pressure can be monitored and managed remotely
- Prevent fail of extinguishing cause of leakage of agent

## Economic

- Agent Filling Rate (27.2kg ~ 66kg)
- Cylinder (68L & 82.5L)

## Reliability

- Cooperation development with **Jensen & Hughes Associates**
- Professional Fire Prevention Design Certificate

## Design Excellence

- Maximum Protection Area (per 1 nozzle) 180 m<sup>2</sup> (13.42x13.42)
- Ratio of Pipe volume to agent volume 220%
- Discharge Time 5.2sec. ~ 10sec.

Product Name		Green-125
Certification Type		가설15-3
Discharge Type		Total Flooding System
Minimum Design Concentration	A,C	8.7%
	B	11.31%
Maximum Permitted Design Concentration		11.5% (When people reside)
Cylinder	82.5ℓ	35kg~50kg (variable charge)
	68ℓ	20.6kg~30kg (variable charge)
Ratio of pipe volume to agent volume		Maximum 220%
Protection Area of Nozzle		180m <sup>2</sup>
Installation Height of Nozzle		0.3m~4.5m
Minimum Design Pressure of Nozzle		8bar
Discharge Time		5.2sec. ~ 10sec.

# Automatic Fire Suppression System



Automatic Fire extinguishing System is installed in small-space such as EPS, TPS to suppress fire early.



## High Sensitive

- The fire sensor is early-response glass bulb at 68°C

## High Quality

- Use of cylinder valve that agent can be discharged and be interlocked with other cylinder concurrently with operating glass bulb.(patented)
- 2.07m<sup>3</sup> protection per agent 1KG. Improvement of minimum 28% in comparison to competitor
- Use of Clean Agent(Personnel safety, No residul) HFC-125

## High Safety

- The safety pin is applied to the only our product to prevent accidental agent discharge by busted glass bulb.
- Minimum 30% Reducing weight in comparison to competitor using high-priced aluminum cylinder(WP6.75Mpa)
- Stability Improvement when installing and maintaining product.

Model		DK-951	DK-952	DK-953	DK-954	DK-955
Type		Single	Multiple			
Design Volume	A,C	19.73m <sup>3</sup>	39.46m <sup>3</sup>	59.19m <sup>3</sup>	78.92m <sup>3</sup>	98.65m <sup>3</sup>
	B	14.08m <sup>3</sup>	28.16m <sup>3</sup>	42.24m <sup>3</sup>	56.32m <sup>3</sup>	70.4m <sup>3</sup>
Protection Area	Min	17.73m <sup>2</sup> (4.91mX3.61m)	17.73m <sup>2</sup> (4.91mX3.61m)	17.73m <sup>2</sup> (4.91mX3.61m)	17.73m <sup>2</sup> X2 (4.91mX3.61mX2)	17.73m <sup>2</sup> X2 (4.39mX2.7m)
	Max		17.73m <sup>2</sup> X 2 (4.91mX3.61mX 2)	17.73m <sup>2</sup> X3 (4.39mX2.7mX3)	17.73m <sup>2</sup> X4 (4.39mX2.7mX4)	17.73m <sup>2</sup> X5 (4.39mX 2.7mX5)
Maximum Installation Height	Multiple	4.5m	8.0m			
	Single		4.2m	4.5m	4.5m	4.5m
Filling Pressure		N2, 25bar@20°C				
Agent quantity		9.5kg	9.5kgX2bottle	9.5kgX3bottle	9.5kgX4bottle	9.5kgX5bottle
Total weight (except support system)		15.9kg	16.1kgX2bottle	16.1kgX3bottle	16.1kgX4bottle	16.1kgX5bottle
PRD,PS interlock		Possible (use of addition device)				
Product Size		Whole length : 729mm(including valve) Diameter : 165mm Cylinder material : aluminum				



### Addressable Fire Alarm Control Panel



- Type : Addressable Fire Alarm Control Panel
- Temperature Range : 0°C ~ 49°C
- Humidity Range : RH 10% ~ 93%
- Point per Loop : 318  
(Detector 159 / Repeater 159)
- Maximum Circuit : 10 LOOP 3,180 circuit
- Size : 1165(H)×613(W)×133(D)  
2000(H)×700(W)×500(D)  
Self-standing type
- Feature : Automatic Programming  
ALK TEST Function  
Fire Alarm 9 stage,  
Preliminary Alarm 9 stage  
Operation of actuator system within 1 sec  
Operation of output repeater within 3 sec





## Manual Call Point / Fire Alarm Cable



### [Manual Call Point]

- 6 terminal, P-type transmitter (DC 24V, KFI Product)
- Manufacturer : VISION ENGINEERING

### [Fire Alarm Cable]

- Fire Alarm Cable (UL/FM) (TSP AWG18,AWG16,AWG14) (T P AWG18,AWG16) (1Pair / 3C : ISOTEC product)

## Underground Piping Indicator



### [Underground Piping Indicator]

- Underground Piping Indicator
- Install Specification : install per below 15m
- Mark of place of business, company, pipe route are possible.
- Material : Mixed copper Series
- SIZE : L:100 x H:150 x D:50
- Direction Sign: Four Type



**VISION**  
ENGINEERING

Visão Serviço de Instalação e manutenção de Máquinas EIRELI – ME  
Av. Rodrigo Otávio, 2890 Distrito Industrial I Cep: 69075 – 005  
Contato: (092) 3086 - 2842 / (092) 98118 - 5977